



APPLICATIONS

Stormwater discharge monitoring

Water quality monitoring

Irrigation control

Stream gauging

Wetland monitoring

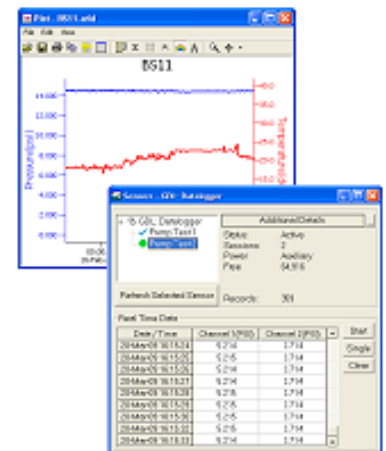
Well, tank, tidal levels

Obtain readings from several connected sensors PLUS surface temperature, barometric pressure, power supply voltage, and automatic barometrically compensated pressure... all in one file!

Features

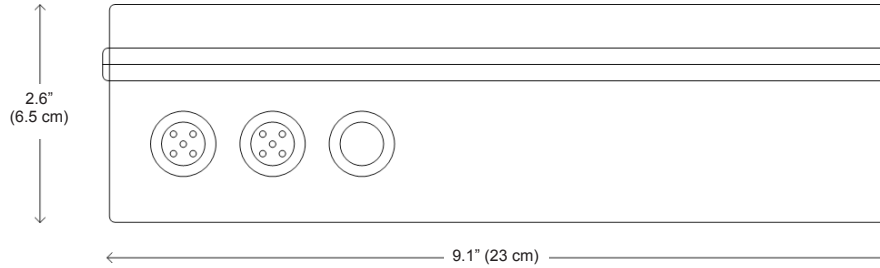
- Automatic barometrically compensated pressure/level
- Modbus® RTU (RS485) and SDI-12 interface — *great flexibility*
- Attach multiple sensors — *up to a total of 32 channels*
- Creates single data file — *easy data management*
 - All connected sensors PLUS
 - Surface temperature
 - Barometric pressure
 - Power supply voltage
 - Barometrically compensated pressure
- No desiccant maintenance
- User selectable units on a channel-by-channel basis
- Non-volatile memory — *no data loss in the event of a power failure*
- Wireless connectivity — *radios and/or cellular*
- Free, easy-to-use software

Contact Your Supplier



Free Software

- Set up flexible recording sequences
- Retrieve data
- Monitor real time data
- View collected data — *tables & graphs*
- Export to spreadsheets and databases with a click of a button



The Compensator has two 5-pin connectors (one for communication and one for down-hole sensors), and a vacuum port.

GENERAL

Weatherproof Box

Enclosure Material	ABS - IP66/67
Dimensions w/ Internal	9.1" x 3.1" x 2.6"
Power Supply (box)	(23 x 7.9 x 6.5 cm)
Dimensions (incl. connectors)	9.1" x 3.6" x 2.6"
	(23 x 9.1 x 6.5 cm)
Wire Seal Materials	Fluorocarbon and Buna N
Desiccant	High- and standard-capacity packs
Protection Rating	IP68, NEMA 6P
Communication	RS485 Modbus® RTU SDI-12 (ver. 1.3)
Direct Modbus Read Output	32-bit IEEE floating point
SDI-12 Output	ASCII
Internal Math	32 bit floating point
Operating Temp. Range	-20° C to 60° C
Storage Temp. Range¹	-40° C to 80° C

LOGGING

Memory	4MB
Log Types	Variable, user-defined, logarithmic, profiled
Programmable Baud Rate	9600, 19200, 38400
Software	Complimentary Aqua4Plus or Aqua4Push
Networking	32 available addresses pre junction w/ batching capabilities (up to 255)
File Formats	.xls / .csv / .a4d

AVAILABLE SENSORS

PT2X	TempHion	GDL
PT12	DO2	T8
CT2X	Turbo	

POWER

Internal	12VDC
-----------------	-------

TEMPERATURE LOGGING (1 BUILT-IN)

Element Type	Digital IC on board
Accuracy	± 0.5° C
Resolution	± 0.1° C
Range	-40° C to 60° C
Units	Celsius, Fahrenheit, Kelvin

BAROMETRIC LOGGING (1 BUILT-IN)

Transducer Type	16 PSIA (1102 mBar) silicon strain guage
Transducer Material	316 stainless steel or titanium
Units	PSI, FtH ₂ O, inH ₂ O, cmH ₂ O, mmH ₂ O, mH ₂ O, inHg, cmHg, mmHg, Bars, mBars, kPa
Static Accuracy	± 0.05% FSO (typical) ± 0.1% FSO (maximum) (B.F.S.L. 20° C)
Resolution	0.0034% FS (typical)
Compensated Range	0° C to 40° C

VOLTAGE (2 BUILT-IN)

Power Supply Logging	Range: 6-15VDC
Secondary Voltage Logging	Range: 0-28VDC

¹ Storage without batteries