



# Mechanical Meters



## FIXED PADDLEWHEEL

### IP800 Series

- 0.5" - 8" Pipe Sizes
- Jewel Bearings
- PVC, Polypro, Brass or Stainless Steel



Designed for a wide variety of fluids. Jewel bearings and nickel-bound tungsten carbide shafts are used for low flow performance and long life.

## PULSING IN-LINE TURBINE

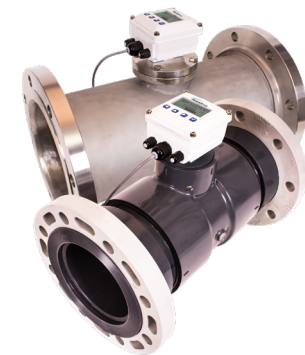
### WJ Series

- Multiple Pulse Rates Available
- Pulse Rate is Field Changeable
- ANSI Flanges



WJ-Series turbine meters are dry-register mechanical totalizers offering accurate, economical reading of high flows with low pressure loss.

## DIGITAL IN-LINE TURBINE



## ADJUSTABLE PADDLEWHEEL

### IP100/200 Series

- 3" - 40" Pipe Sizes
- Jewel Bearings
- PVC, Brass or Stainless
- Hot Tap Available



Ruby bearings and a non-drag Hall-effect sensor give these meters the widest flow range of any paddlewheels on the market.

## MULTIJET PULSE

### MJ Series

- Multiple Pulse Rates Available
- Pulse Rate is Field Changeable
- 105°F Cold; 194°F Hot
- NSF Available
- 3 Models: MJ, MJH, MJN



This type of meter is known for its wide range, simplicity, and accuracy in low-quality water.

### WT Series

- PVC or Stainless Steel
- Pulse Output Standard
- 4-20mA Output Optional
- Jewel Bearings

This unique system of 2" to 8" turbine meters uses just one moving part, a precision helical rotor.