

Turbo Turbidity Sensor

WITH DATA LOGGING



APPLICATIONS

Monitoring streams and rivers

Monitoring water storage bodies, including stratification studies

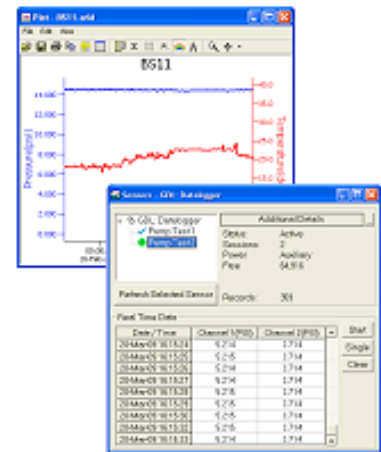
Intermediate and final effluent treatment monitoring

Hydrological run-off studies

Ground and bore water analysis

Features

- Measures and records turbidity and temperature
- Modbus® RTU (RS485) and SDI-12 interface — *great flexibility*
- 260,000+ record non-volatile memory — *no data loss in the event of a power failure*
- Programmable warm-up time
- Free, easy-to-use software
- Replaceable wiper blade



Contact Your Supplier

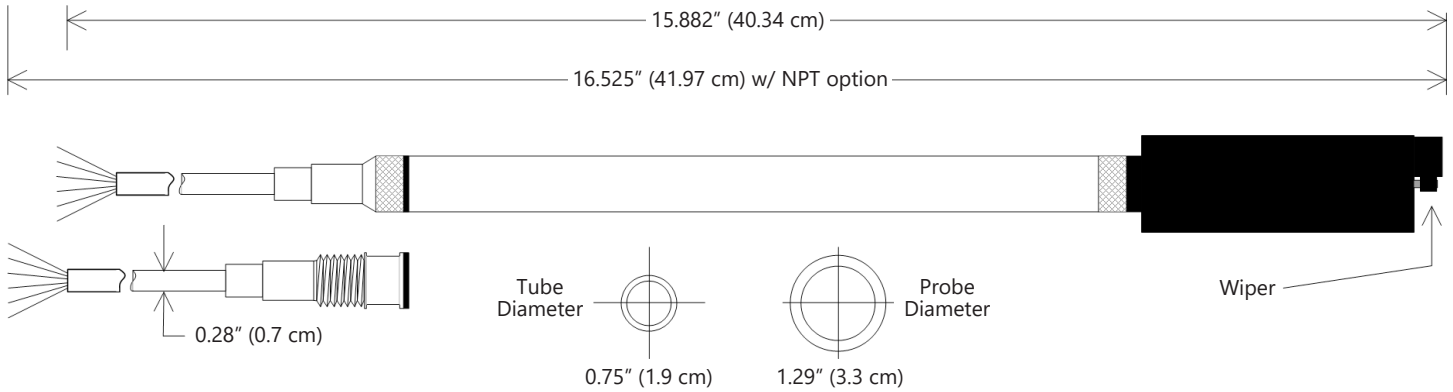
Free Software

- Set up flexible recording sequences
- Retrieve data
- Monitor real time data
- View collected data— *tables & graphs*
- Export to spreadsheets and databases with a click of a button



Turbo Turbidity Sensor

WITH DATA LOGGING



GENERAL

| | |
|----------------------------------|--|
| Length | 15.882" (40.34 cm) w/ cable harness 16.525" (41.97 cm) w/ NPT adapter |
| Probe Diameter | 1.29" (3.3 cm) |
| Tube Material | Acetal & 316 stainless steel |
| Probe Material | Composite |
| Wire Seal Material | Fluoropolymer and PTFE |
| Submersible Cable | Polyurethane, polyethylene, or ETFE available |
| Terminating Connector | Available |
| Communication | RS485 Modbus® RTU SDI-12 (ver 1.3) |
| Direct Modbus Read Output | 32-bit IEEE floating point |
| Internal Math | 32-bit floating point |
| Operating Temp. Range | 0° C to 40° C |
| Storage Temp. Range | -20° C to 50° C |

LOGGING

| | |
|-------------------------------|--|
| Memory | 260,000+ records |
| Log Types | Variable, user-defined, logarithmic, profiled |
| Programmable Baud Rate | 9600, 19200, 38400 |
| Logging Rate | 2x/sec maximum |
| Software | Complimentary Aqua4Plus |
| Networking | 32 available addresses per junction w/ batching capabilities (up to 255) |
| File Formats | .csv / .a4d |

SENSOR

| | |
|--------------------------|--|
| Measuring Ranges | 0–400 NTU 0–3000 NTU |
| Accuracy | ± 2% or ± 2 NTU @ 25° C (whichever is greater) |
| Repeatability | ± 2% @ 25° C |
| Temperature Range | 0° C to 40° C |
| Maximum Depth | 164 ft (50 m) |

POWER

| | |
|--|---------------------------|
| External Power Pack Required | 12 Vdc nominal (9–16 Vdc) |
| Seametrics Power Packs available. Contact Seametrics for details. | |