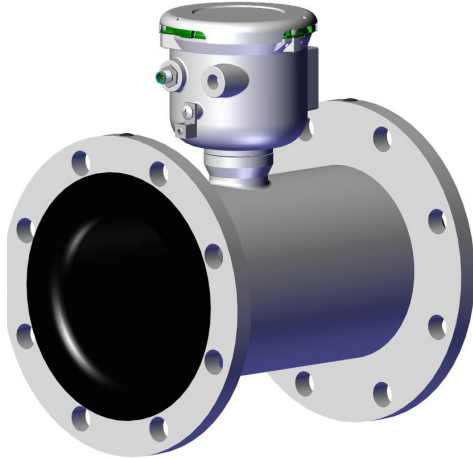
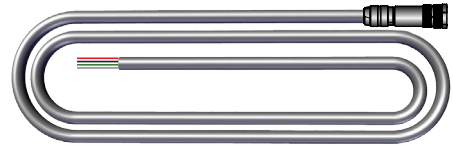


### Check Components



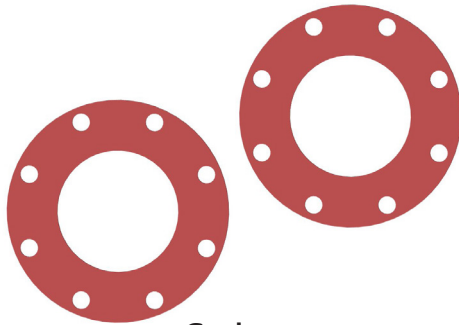
Meter and  
Indicator with  
Hinged Cover



Power/Output Cable  
(DC configuration)

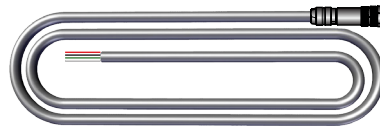


Security Seal



Gaskets  
Failure to install  
gaskets will void  
warranty!

### Optional



Output Cable  
(Battery configuration)

### Recommended Tools

#### Recommended:

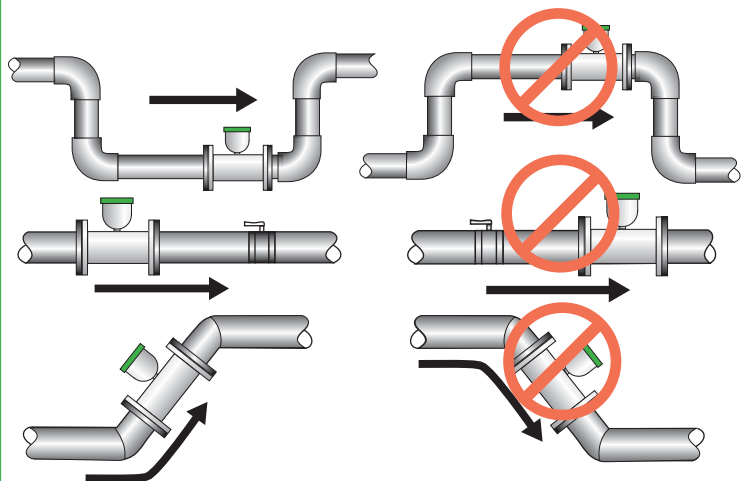
- T-15 Torx head driver
- 0.098 inch (small) flat head screw driver
- Crescent Wrench

#### Optional:

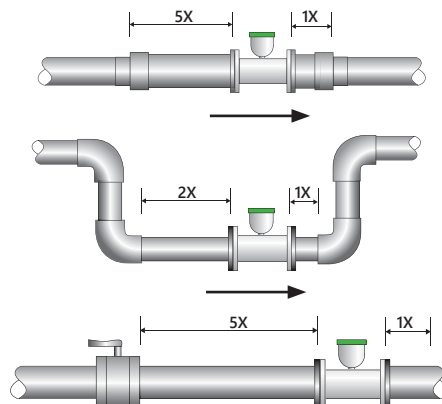
- Channel locks

## Positioning

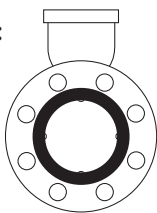
Choose a position that will ensure a full pipe.



Choose a position that will minimize flow distortion.



**Acceptable Position:**



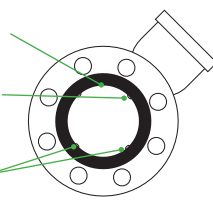
**Recommended Position:**

If air or sediment are present. Air or sediment on electrodes can affect reading.

Intermittent air bubbles miss electrode

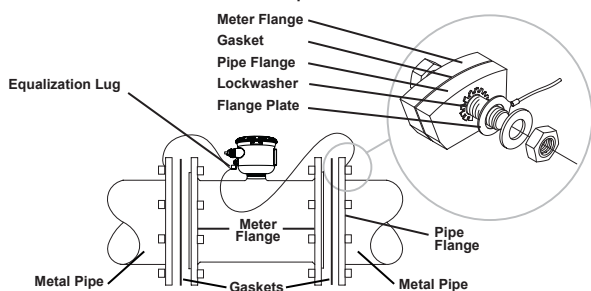
Electrode moved from top by rotating meter

Electrodes free from sediment build-up

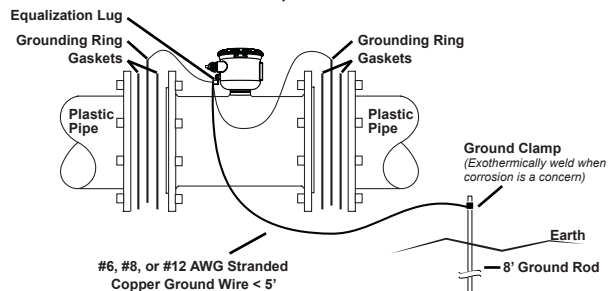


## Grounding

**Metal Pipe**



**Plastic Pipe**



## Warnings

Refer to instruction manual for further details.

- Do not weld or flame cut within 10' of meter. Heat will damage electronics and liner. (Heat will void warranty.)
- Install provided full face gaskets. **Failure to install gaskets will void warranty.**
- Tube must be completely aligned with adjoining flanges.
- Ensure proper grounding.
- Bolts must be tightened evenly. Do not over tighten one side to fill a gap.
- Install security seal during installation if regulations require.
- Backup batteries are not intended as a primary power source.**

Refer to the **Electrical Quick Start Guide** or the complete instruction manual for details on wiring.