

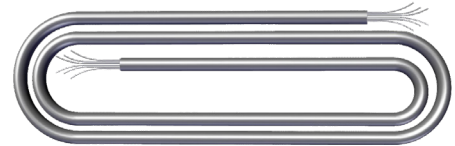
### Check Components



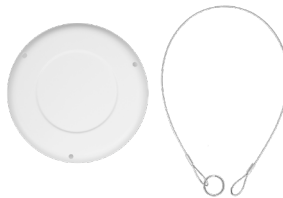
Meter



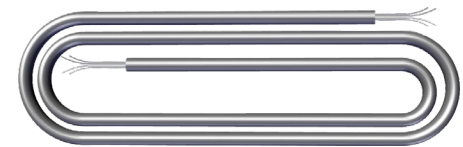
Remote Display



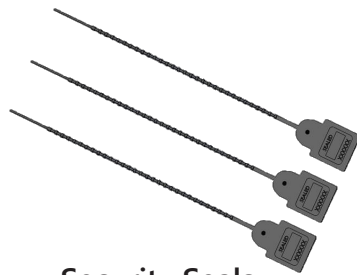
Power/Output Cable



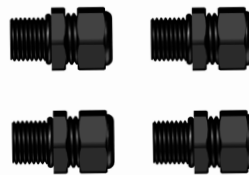
Protective faceplate cover and lanyard



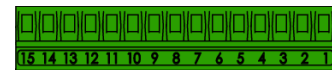
Remote Sensor Cable



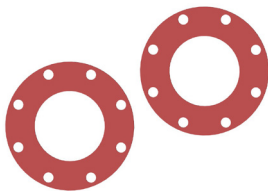
Security Seals



Cable Glands



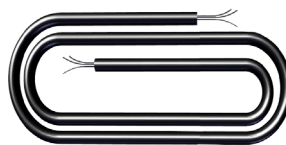
15 Pin Connector



Gaskets

Failure to install gaskets will void warranty!

### Optional



Six foot AC power cable for AC configurations



Second output cable

### Recommended Tools

#### Recommended:

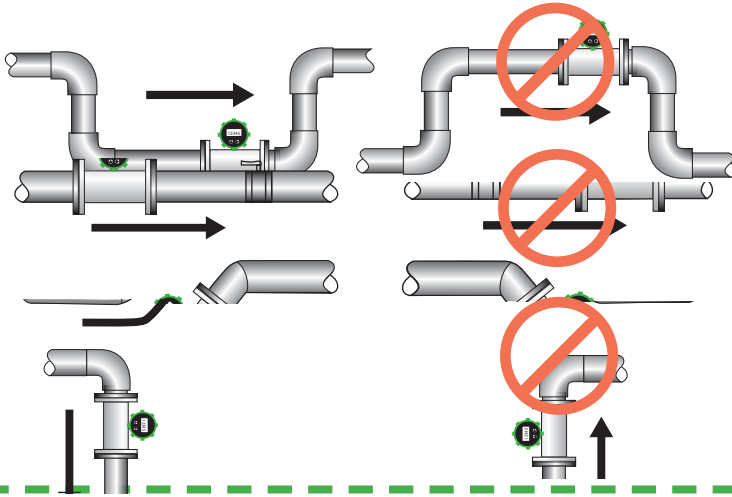
- T-15 Torx head driver
- 0.098 inch (small) flat head screw driver
- Crescent Wrench

#### Optional:

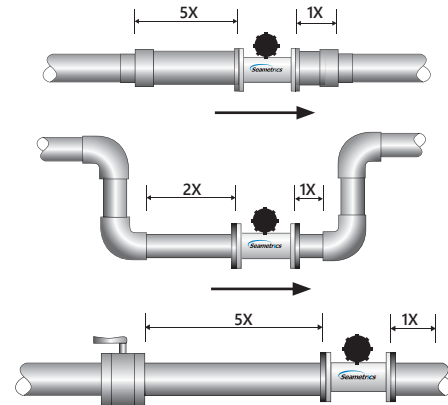
- Channel locks

### Positioning

Choose a position that will ensure a full pipe.



Choose a position that will minimize flow distortion.

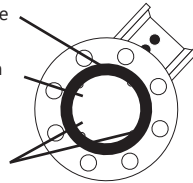


**Recommended:**  
Improved accuracy  
results from  
unimpeded electrodes

Intermittent air  
bubbles miss electrode

Electrode moved from  
top by rotating meter

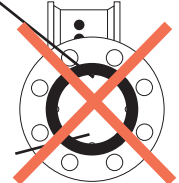
Electrodes free from  
sediment build-up



**Not Ideal:**  
Air bubbles and  
sediment on the  
electrodes can affect  
accuracy

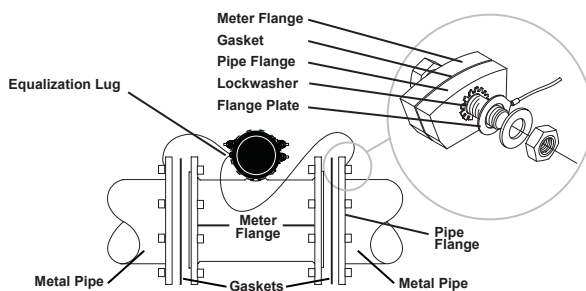
Intermittent air  
bubbles pass  
over electrode

Possible  
sediment  
build-up

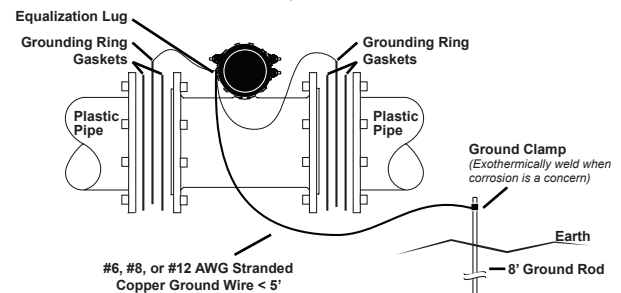


### Grounding

#### Metal Pipe



#### Plastic Pipe



### Warnings

Refer to manual for further details.

- Do not weld or flame cut within 10' of meter. Heat will damage electronics and liner. (Heat will void warranty.)
- Install provided full face gaskets. **Failure to install gaskets will void warranty.**
- Tube must be completely aligned with adjoining flanges.
- Ensure proper grounding.
- Bolts must be tightened evenly. Do not over tighten one side to fill a gap.
- Improper sealing of cables or cable glands will void warranty.
- Install security seal during installation if regulations require.
- **Backup batteries are not intended as a primary power source.**

Refer to the **Electrical Quick Start Guide** or the complete instruction manual for details on wiring.