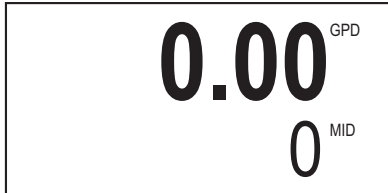




The Home Screen



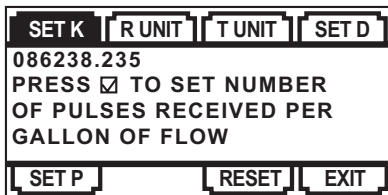
The Home screen displays total flow volume and flow rate. The four buttons below the LCD display are used to access menu screens for viewing and changing setup parameters.



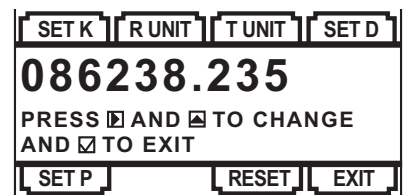
Press the check mark key to enter a submenu.

The left/right keys are used to move through the menus and position the cursor during data entry. The up arrow is used to scroll through the available values that are to be entered. For example, numerical values for K factor entry or selection of units from the available options. The enter key (represented on the keypad by the check mark) is used to save selected entries and in conjunction with the exit tab to move between menu screens. As one navigates the menus, the current parameter setting is shown and instructions are displayed for how to change the selected parameter.

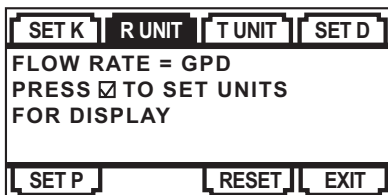
Set K Factor (SET K)



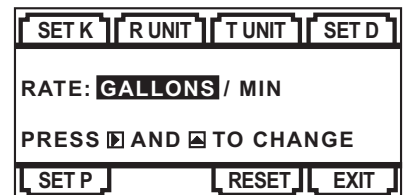
The K factor is the number of pulses the flow sensor provides to the FT430/440/450 for every gallon of flow. (Note that the decimal is fixed at three places. If you only have two decimal places for your K-factor, enter a zero for the third digit. If unable to set K-factor, the unit is "locked" to prevent tampering. Please contact your distributor for assistance.)



Set Rate Display (R UNIT)



View or change the flow rate display units.



Set Total Display Units (T UNIT)

SET K	R UNIT	T UNIT	SET D
TOTAL = GALLONS PRESS <input checked="" type="checkbox"/> TO SET UNITS FOR DISPLAY			
SET P	RESET	EXIT	

View or change the total volume display units.

SET K	R UNIT	T UNIT	SET D
TOTAL: GALLONS PRESS <input checked="" type="checkbox"/> TO CHANGE			
SET P	RESET	EXIT	

Set Number of Decimal Places (SET D)

SET K	R UNIT	T UNIT	SET D
000 PRESS <input checked="" type="checkbox"/> TO CHOOSE NUMBER OF DECIMAL PLACES IN TOTAL DISPLAY			
SET P	RESET	EXIT	

View or change the number of decimals displayed in the total volume display.

SET K	R UNIT	T UNIT	SET D
000 PRESS <input checked="" type="checkbox"/> TO CHANGE			
SET P	RESET	EXIT	

Set Pulses for Pulse Out 1 (SET P)

SET K	R UNIT	T UNIT	SET D
00000.0 GALLONS PRESS <input checked="" type="checkbox"/> TO SET NUMBER OF GALLONS TOTALIZED PER PULSE SENT OUT PULSE1			
SET P	RESET	EXIT	

The factory setting will show Set P which allows you to view or change the volume of flow totalized per pulse sent to pulse out 1. The units for Set P follow the units selected for the rate display.

(With EXIT highlighted, pressing the up arrow four times will allow Output 1 to be an alarm. The alarm can be set to trigger on either a high or low flow condition as determined by the user. Refer to the FT430/440/450 instruction manual for details.)

Exit & Save Setup (EXIT)

SET K	R UNIT	T UNIT	SET D
PRESS <input checked="" type="checkbox"/> TO EXIT MENU AND RETURN TO FLOW DISPLAY			
SET P	RESET	EXIT	

Return to the home screen or the previous menu if in a submenu.

(Pressing the up arrow four times while EXIT is highlighted will bring you to a secondary menu, allowing you to set alarms, set pulse output 2, change the input and jitter filters, as well as access protected features. Refer to the FT430/440/450 instruction manual for details.)

For Data Logger operation and set-up, see FlowInspector Instructions.