



# **Chemical & Fertilizer Metering**



## **PLASTIC MECHANICAL**

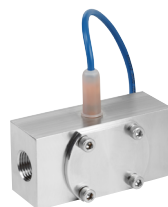


### **SPX/SPT**

**Polypro or Teflon Bodies**  
**Pulse Output (Optional 4-20mA)**  
**Jewel Bearings**  
**Chemical Resistant**

*For metering low-flow chemicals and fertilizers, these mechanical meters are offered with a variety of O-ring and shaft materials to fit your application.*

## **STAINLESS MECHANICAL**



### **SES**

**Stainless Steel Body**  
**Pulse Output (Optional 4-20mA)**  
**Jewel Bearings**

*For low-flow chemical metering, the SES has a high tolerance for problem fluids. Various O-ring and shaft materials are available.*

## **INSERTION PADDLEWHEEL**



### **IP800 Series**

**1/2" - 8" Pipe Sizes**

**Jewel Bearings**

**PVC, Polypro, Brass or Stainless Steel**

*Constructed with jewel bearings and designed for low flow performance and long life. Available with a variety of O-ring and shaft materials for chemical compatibility.*

## **LOW-FLOW MAGMETER**



### **PE202**

**1/4" - 3/4" Sizes**  
**Corrosion & Chemical Resistant**  
**Externally Powered**  
**No Straight Pipe Requirement**  
**Pulse and 4-20mA Output**

*The PE202 is designed for low-flow chemical and fertilizer injection or difficult applications with pulsating metering pumps.*

## **PLASTIC MAGMETER**



### **WMP Series**

**1" - 3" Sizes**  
**External or Battery Powered**  
**2:1 Straight Pipe**  
**Polypro Body**  
**Pulse Output (101 only)**

*The WMP's polypropylene flow tube offers corrosion resistance to a wide range of chemicals and fertilizers. It's light weight and easy to install or remove.*