



AG3000 SERIES

Flanged Magmeters

- Pulse or 4-20mA output standard
- Additional outputs optional
- Unobstructed flow
- Optional data logging
- Battery or external power
- IP68
- Straight pipe requirement: 2 up, 1 down
- 2" = 2 - 321 GPM
- 3" = 4 - 722 GPM
- 4" = 7 - 1285 GPM
- 6" = 15 - 2891 GPM
- 8" = 26 - 5140 GPM
- 10" = 41 - 8031 GPM
- 12" = 58 - 11565 GPM
- +/- 1% of reading between 10% - 100% of max flow



Minimal straight pipe requirements allow AG3000 meters to be used where there is little installation space. Unobstructed flow and no moving parts reduce maintenance costs and it's backed by our industry leading 5 year warranty.

AG90

Battery Powered Insertion Magmeter

- Battery Powered
- No moving parts
- Pulse output standard
- Optional Datalogging
- 4 year battery life
- IP67
- 4" = 19.3 - 578 GPM
- 6" = 43.11 - 1301 GPM
- 8" = 77.1 - 2313 GPM
- 10" = 120.5 - 3614 GPM
- 12" = 173.5 - 5204 GPM



Fits right into new or propeller meter replacement installations. No moving parts or bearings to replace means no maintenance, plus it's backed by our industry leading 5 year warranty.

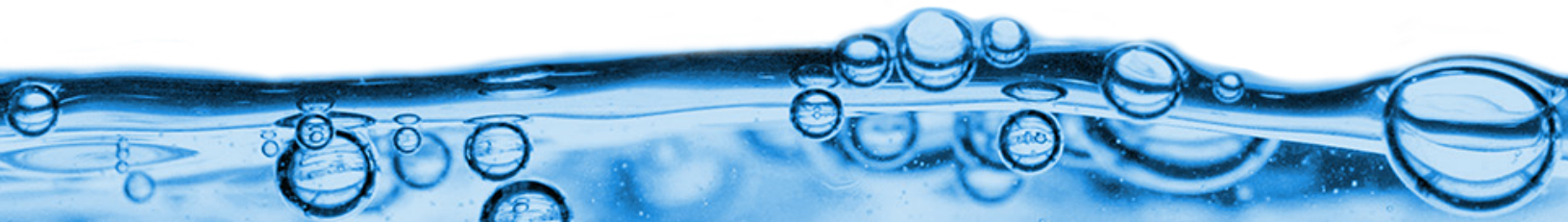
WMP SERIES

Plastic-Bodied Magmeters

- WMP101 = 10 - 30 Vdc pulse output
- WMP104 = battery powered, no output
- Straight pipe requirement: 2 up, 1 down
- Water monitoring
- Chemicals & fertilizers
- +/- 1% of reading between 10% - 100% of max flow
- 1" = 2.3 - 110 GPM
- 2" = 6 - 300 GPM
- 3" = 14 - 670 GPM



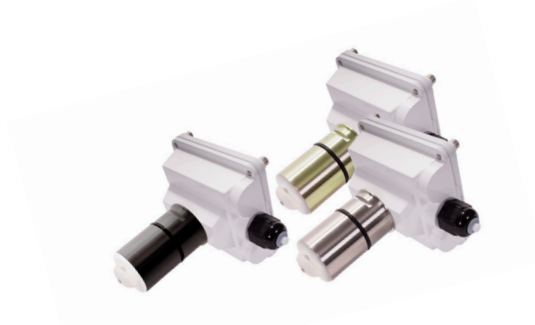
Great for small irrigation pipe, the glass-reinforced polypropylene flow tube also offers corrosion resistance to a wide range of fertilizers and chemicals.



EX800 SERIES

Fixed Depth Insertion Magmeters

- Externally powered
- PVC, brass or stainless steel
- No moving parts
- +/-1% of full scale
- EX810, 1" - 3" pipe = .69 - 440 GPM
- EX820, 4" - 10" pipe = 11 - 4,900 GPM
- EX830, 12" pipe = 99 - 7,050 GPM

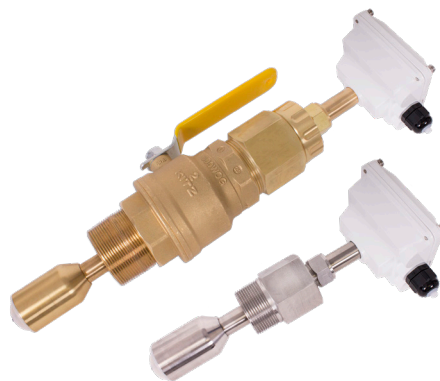


Easy to install, these meters are designed for no maintenance in a variety of irrigation pipe sizes and types.

EX100/200 SERIES

Adjustable Depth Insertion Magmeters

- Brass or stainless steel
- Externally powered
- Hot tap available
- No moving parts
- +/-1% of full scale
- EX110/150, 3" - 10" pipe = 6 - 4,895 GPM
- EX210/250, 10" - 48" pipe = 69 - 112,804 GPM

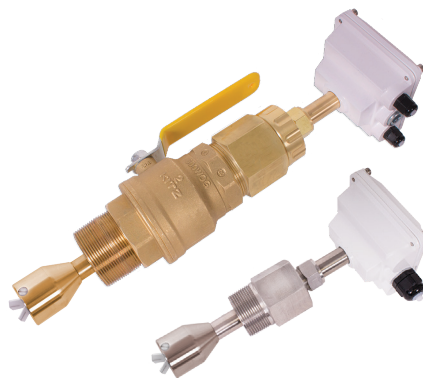


Easy to install, these meters withstand a variety of temperature, pressure and poor water conditions. With no moving parts, these meters are low maintenance and fit a variety of pipe sizes and types.

IP100/200 SERIES

Adjustable Depth Insertion Paddlewheels

- Brass or stainless steel
- External or battery powered
- Hot tap available
- +/-1½% of full scale
- IP110/150, 3" - 12" pipe = 6.9 - 10,470 GPM
- IP210/250, 12" - 40" pipe = 105 - 111,000 GPM



Ruby bearings and a non-drag Hall-effect sensor give these paddlewheel flow sensors a wide flow range and long life.



FT400 SERIES

Rate/Total Indicators

- Simple setup
- Pulse or 4-20mA output
- 6 digit rate; 8 digit total
- Flow alarm
- Selectable units
- Optional data logging
- Battery or external power



Flow rate & totalizing display can be remote, meter or panel mounted. Can be external or battery powered, depending on meter model and includes a variety of outputs.

PC SERIES

Power Supplies

- Single or dual power supply
- Rugged plastic housings
- 12Vdc or 24Vdc



Regulated and unregulated, single or dual power supplies with wall, plug-in or din-rail mounting styles.

PE202

Low-Flow Magmeter

- No straight pipe requirement
 - Corrosion resistant
 - Pulse or 4-20mA output
 - Fertigation
 - Chemigation
-
- +/-1%, +/- .005 GPM of reading across rated range
 - 1/4" & 3/8" models = .03 - 3 GPM
 - 1/2" & 3/4" models = .2 - 20 GPM



The PE202 is ideally designed for low-flow chemical and fertigation injection and difficult applications with pulsating metering pumps.

RSP5

Solar Panel

- Includes hardware & charge controller
- Reliable, maintenance free operation
- Powers most Seametrics products



The RSP5 solar panel makes it possible to use externally powered Seametrics flowmeters in remote applications where a reliable source of electricity is not available or practical.

Since 1990, Seametrics has been providing high value flow meters and controls. Our guiding principles have been simplicity, and affordability. Over the years our product line has expanded from inexpensive mechanical meters to a highly accurate family of affordable electromagnetic & ultrasonic flow meters to fit a wide range of applications.

